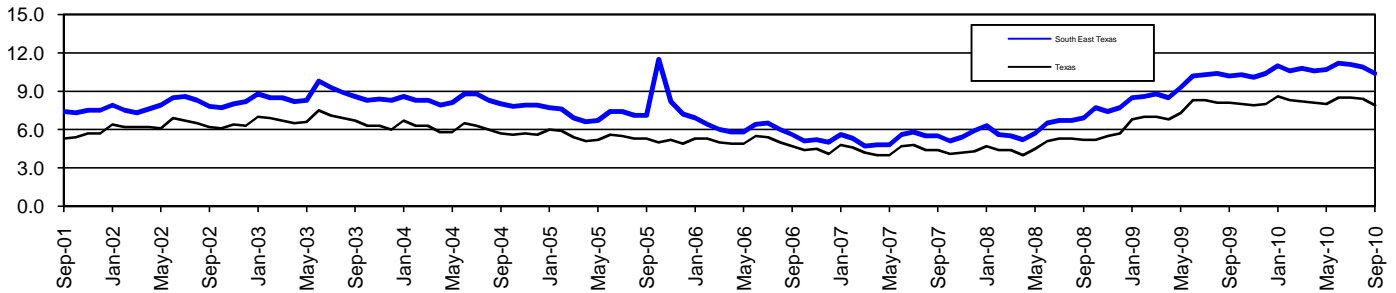


South East Texas Workforce Development Area*

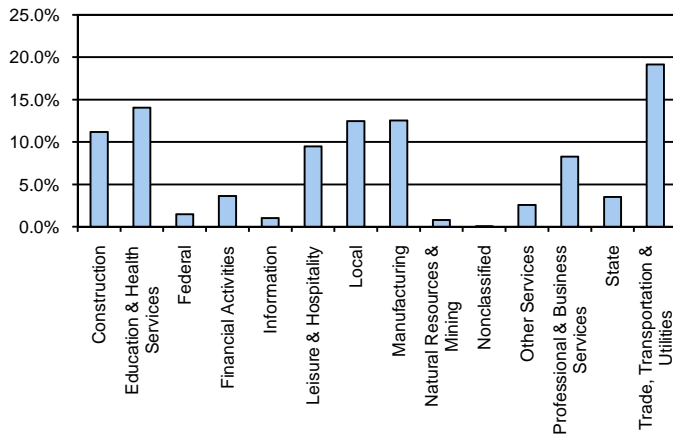
September 2010

South East Texas WDA					Texas				
	CLF	Employed	Unemployed	Rate		CLF	Employed	Unemployed	Rate
Sep-10	186,825	167,470	19,355	10.4	Sep-10	12,165,687	11,209,084	956,603	7.9
Aug-10	186,989	166,579	20,410	10.9	Aug-10	12,190,333	11,168,971	1,021,362	8.4
Sep-09	183,742	164,942	18,800	10.2	Sep-09	12,004,418	11,031,467	972,951	8.1

Historical Unemployment Rates



South East Texas WDA Industry Composition 1st Quarter 2010



Total WDA Claims

	Sep-10	Aug-10	Sep-09	OTY
Initial	2,165	2,495	2,852	-687
Continued	9,943	11,838	14,526	-4,583
Continued Claims for the Week of the 12th				
Continued	540	602	1,101	-561

Texas Unemployment Insurance Claims Filed

	Sep-10	Aug-10	Sep-09	OTY
Initial	83,025	91,613	98,946	-15,921
Continued	859,823	1,064,768	1,188,040	-328,217
Continued Claims for the Week of the 12th				
Continued	198,589	218,763	276,553	-77,964

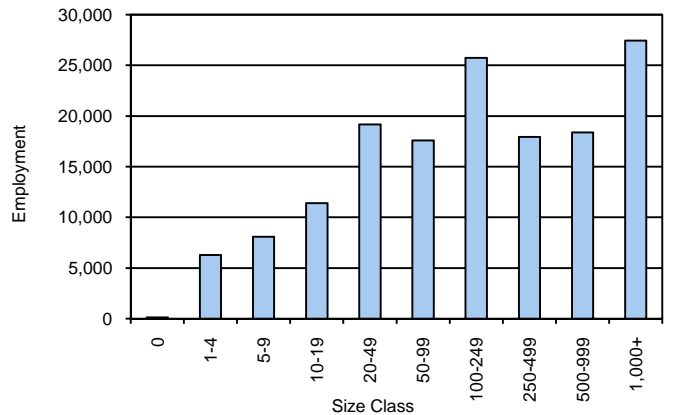
South East Texas WDA Average Weekly Wage

	South East Tx	WDA Qtr. Chg.	Texas
1st Quarter 2010	\$820.34	-\$66.92	\$893.19
4th Quarter 2009	\$887.26	WDA OTY Chg.	\$944.14
1st Quarter 2009	\$833.80	-\$13.46	\$886.34

NAICS Covered Employment Quarterly Data 1st Quarter 2010

SUPER SECTOR	Employment	Change	
		Quarter	Year
Construction	16,996	359	-1,584
Education & Health Services	21,383	-199	293
Federal	2,236	81	144
Financial Activities	5,491	-52	-100
Information	1,506	-40	-297
Leisure & Hospitality	14,399	-271	-190
Local	18,928	416	1,046
Manufacturing	19,050	99	-2,253
Natural Resources & Mining	1,213	-240	-409
Nonclassified	37	15	-8
Other Services	3,908	-84	-150
Professional & Business Services	12,548	-5	-1,779
State	5,316	-99	-133
Trade, Transportation & Utilities	29,158	-1,040	-1,484
TOTAL	152,169	-1,060	-6,904

Size Class Employment Composition 1st Quarter 2010



*Counties in WDA: Hardin, Jefferson, & Orange